



BOROUGH OF CONSHOHOCKEN

Office of the Executive Director of Operations

EMERGENCY MANAGEMENT

BOROUGH COUNCIL
Colleen Leonard, President
Tina Sokolowski, Vice-President
Robert Stokley, Member
Anita Barton, Member
James Griffin, Member
Kathleen Kingsley, Member
Karen Tutino, Member

Yaniv Aronson, Mayor

Stephanie Cecco, Borough Manager

EMERGENCY PREPAREDNESS QUICK GUIDE



Borough of Conshohocken Emergency Management

For assistance, contact an Emergency Management team member at 484-243-6069.

Z Raymond Sokolowski, Exec. Dir. of Operations | Emergency Management Coordinator | BCO

David Lennon, Police Sgt. | Deputy Emergency Management Coordinator

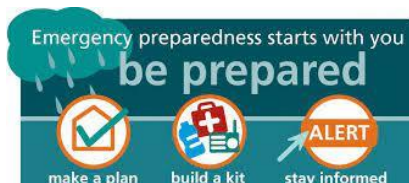
Steve Young, Career Firefighter | Deputy Emergency Management Coordinator

Bobbi Jo Myrsiades, Administrative Assistant - Operations

Be Informed

Be aware of the Borough of Conshohocken's Emergency alert capabilities and your alternatives for monitoring emergency information.

- Borough of Conshohocken – website and social media outlets
- Emergency Alert System CodeRED
- Colonial School District
- Montgomery County
- News media sources, local radio, cable, or television stations





BOROUGH OF CONSHOHOCKEN

Office of the Executive Director of Operations

EMERGENCY MANAGEMENT

BOROUGH COUNCIL
Colleen Leonard, President
Tina Sokolowski, Vice-President
Robert Stokley, Member
Anita Barton, Member
James Griffin, Member
Kathleen Kingsley, Member
Karen Tutino, Member

Yaniv Aronson, Mayor

Stephanie Cecco, Borough Manager

Overview

Why Prepare for Disasters



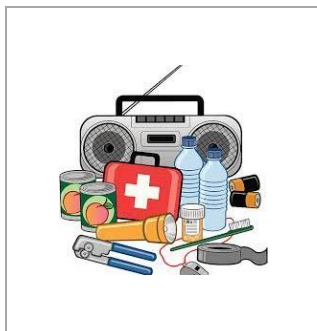
Disaster can strike without warning, forcing you to go for days without necessities or to evacuate your home. Relief workers will be on the same scene following a disaster but may not be able to reach you immediately.

Creating a Basic Plan



Knowing the steps to take during a disaster can greatly reduce the danger and distress your family may face. Your emergency plan should accommodate any unique needs related to family, pets, infants, children and any family members with health, disability, or mobility concerns.

Disaster Supply Kit



If there is an emergency in our area, you might not be able to get food, water, and other necessities you need. That is why a key action for preparedness is to make an emergency supply kit and keep it readily available in your home.



BOROUGH OF CONSHOHOCKEN

Office of the Executive Director of Operations

EMERGENCY MANAGEMENT

BOROUGH COUNCIL
Colleen Leonard, President
Tina Sokolowski, Vice-President
Robert Stokley, Member
Anita Barton, Member
James Griffin, Member
Kathleen Kingsley, Member
Karen Tutino, Member

Yaniv Aronson, Mayor

Stephanie Cecco, Borough Manager

Creating a Basic Emergency Plan

Getting Started

Having a plan is one of the most important steps you can take in disaster preparedness. Include family, children, pets, and those with unique needs.

- Decide what you and your family would do in each potential emergency. Monitor emergency alerts through CodeRED.
 - Types of disasters for our area
 - Flooding/Flash Flooding
 - Winter storms
 - Hurricanes
 - Thunderstorms
 - Active Shooter
 - Pandemic
 - Fires
 - Hazardous Materials
 - Extreme Heat Conditions
- Draw a floor plan of your home showing escapes routes.
- Choose a place away from your neighborhood where family members can meet in case you are separated and cannot return home.
- Identify a friend or relative who lives out of the area for family members to contact if separated.
- Post/Save emergency numbers and teach children how to dial 911.
- Know how to shut off the water, gas and electric at the main switches in your home.
- Plan how to help elderly or the disabled.
- Check that your insurance policies are up-to-date and provide good coverage.



Sign up for CodeRED alerts!

Visit the Borough of Conshohocken website to sign up for CodeRED alerts.

www.conshohockenpa.gov

For assistance, contact an Emergency Management team member at 484-243-6069.

Z Raymond Sokolowski, Exec. Dir. of Operations | Emergency Management Coordinator | BCO

David Lennon, Police Sgt. | Deputy Emergency Management Coordinator

Steve Young, Career Firefighter | Deputy Emergency Management Coordinator

Bobbi Jo Myrsiades, Administrative Assistant - Operations



BOROUGH OF CONSHOHOCKEN

Office of the Executive Director of Operations

EMERGENCY MANAGEMENT

BOROUGH COUNCIL

Colleen Leonard, President
Tina Sokolowski, Vice-President
Robert Stokley, Member
Anita Barton, Member
James Griffin, Member
Kathleen Kingsley, Member
Karen Tutino, Member

Yaniv Aronson, Mayor

Stephanie Cecco, Borough Manager

Evacuation

In a disaster, it may be necessary to evacuate your home for several days or longer.

1. Contact the local emergency management office to learn evacuation routes for your area.
2. Determine where you will go if your community is evacuated.
3. Discuss with your family the possibility of evacuation.
4. Find out your child's school evacuation policy.
5. Check that your disaster supply kit is assembled and ready to go.
6. Make sure your car is filled up, fuel may be in short supply during a disaster.

When authorities tell you to evacuate

- Bring your disaster supply kit.
- Wear sturdy shoes and clothing.
- Unplug home electronics.
- Lock the doors and windows.
- Turn off the main switches and valves for gas, water, and electricity, if instructed.
- Inform a friend or relative of your route.
- Follow recommended evacuation routes. Watch for washed-out bridges, flooded areas, and downed power lines.

Pets

- Pets should not be left behind during a disaster.
- Attach ID Tags to your pet with your name and phone number.
- Make a list of Pet shelters and hotels that permit animals in the area you would evacuate to. (Public Shelters do not allow pets)
- Put together an emergency supply kit for your pet. (Collar, leash, food, medicines, pet carrier, comfort items)

Shelter-in-place



Shelter-in-place means to take immediate shelter where you are at home, work, school or in-between. Learn where to go, what to do, and how long you should shelter-in-place for the hazards in your area.

When authorities tell you to Shelter-in-Place

- Have your disaster supply kit.
- Have all cell phones/tablets, computers, electronics, etc. charged in case of power outages.
- Turn off the main switches and valves for gas, water, and electricity, if instructed.
- Inform a friend or relative of the situation.
- Notify Emergency Officials prior to Shelter in Place of any medical or special needs. There could potentially be substantial rescue delays.



BOROUGH OF CONSHOHOCKEN

Office of the Executive Director of Operations

EMERGENCY MANAGEMENT

BOROUGH COUNCIL
Colleen Leonard, President
Tina Sokolowski, Vice-President
Robert Stokley, Member
Anita Barton, Member
James Griffin, Member
Kathleen Kingsley, Member
Karen Tutino, Member

Yaniv Aronson, Mayor

Stephanie Cecco, Borough Manager

After a disaster

DAMAGE



- Look for structural damage, loose or damaged electrical wires, and gas leaks before re-entering your home.
- Report Utility Problems: For all utility outages and other service-related issues, call the utility company directly.
- Call 911 to report downed power lines, gas odors, sewer water main breaks, or other dangerous conditions.
- Gas Odors – Do not turn off (or on) any switches or appliances. Go off the premises to dial 911. Try not to fix it yourself.
- Fire Damage – Do not enter a fire-damaged house until authorities have inspected it.
- Contact your insurance agent.

Be sure to review and practice your plan with family members, including children, at least twice a year.

Thank you for using this guide to ensure you and your family are better prepared for an emergency.

For assistance, contact an Emergency Management team member at 484-243-6069.

Z Raymond Sokolowski, Exec. Dir. of Operations | Emergency Management Coordinator | BCO

David Lennon, Police Sgt. | Deputy Emergency Management Coordinator

Steve Young, Career Firefighter | Deputy Emergency Management Coordinator

Bobbi Jo Myrsiades, Administrative Assistant - Operations



BOROUGH OF CONSHOHOCKEN

Office of the Executive Director of Operations

EMERGENCY MANAGEMENT

BOROUGH COUNCIL

Colleen Leonard, President
Tina Sokolowski, Vice-President
Robert Stokley, Member
Anita Barton, Member
James Griffin, Member
Kathleen Kingsley, Member
Karen Tutino, Member

Yaniv Aronson, Mayor

Stephanie Cecco, Borough Manager

BE AWARE, BE PREPARED – IMPORTANT NUMBERS

To Report an Emergency... Dial 911

Conshohocken Police Department

400 Fayette St. – Suite 100
Conshohocken, PA 19428
Ph# (610)828-4032
Emergency: 911

Conshohocken Fire Company No 2 – (Station 55 A)

819 Fayette Street
Conshohocken, PA 19428

Washington Fire Company No. 1 – (Station 55 B)

36 W. Elm Street
Conshohocken, PA 19428

Narberth Ambulance

500 East Hector Street
Conshohocken, PA 19428
Crew Phone: (610) 825-6672
www.narberthambulance.org

Emergency Management – Borough of Conshohocken

400 Fayette St. – Suite 200
Conshohocken, PA 19428
Ph# (484)243-6069

Contacts:

Z Raymond Sokolowski, Exec. Dir. of Operations | Emergency Management Coordinator | BCO
David Lennon, Police Sgt. | Deputy Emergency Management Coordinator
Steve Young, Career Firefighter | Deputy Emergency Management Coordinator
Bobbi Jo Myrsiades, Administrative Assistant - Operations

www.conshohockenpa.gov

UTILITIES

[ELECTRIC AND GAS](#) = PECO | Emergencies 1-800-841-4141

[WATER](#) = AQUA America | 1-877-987-2782

[SEWER](#) = Borough of Conshohocken Authority | 610-828-0979